

Wetting Caps

for the installation on immersion armatures and tank walls



The wetting caps are utilised to prevent a dry-up of the glass membranes of stationary installed electrodes. They are either installed at an existing immersion armature or at the inner wall of a tank.

Features

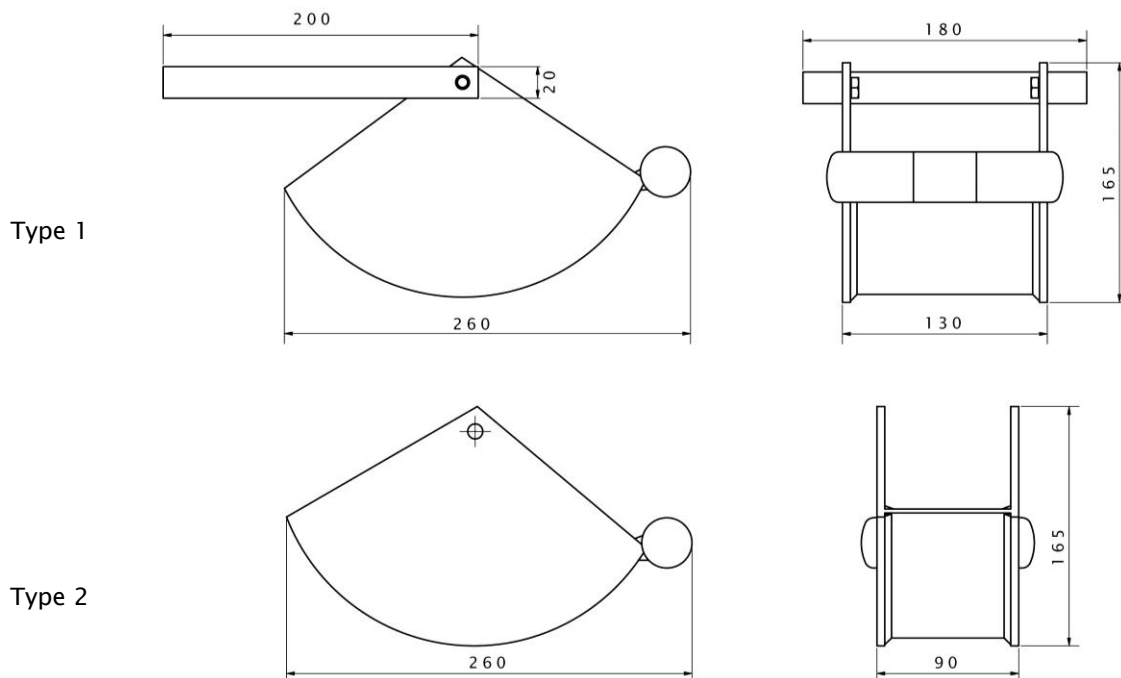
- to prevent the dry-up of glass membranes
- installation depending on wetting cap type
 - type 1: at the inner tank wall (immersion armature located close to the tank wall)
 - type 2: directly at the lower end of the immersion armature
- mode of operation:
 - an increasing fluid level within the tank leads to a lateral rotation of the wetting cap due to integrated floating body and a filling with fluid
 - a declining fluid on a level below the wetting cap leads to a lateral rotation of the wetting cap back to a position below the immersion armature what keeps the membrane wet
- also suitable for immersion armatures modified with a spray head
- high operational reliability
- universally applicable at temperatures up to +75 °C
- robust, ready-to-install design
- easy installation and handling
- also for subsequent installation
- not applicable in heavily drifting fluids

Application fields

- preferred application in water treatment, water purification and exhaust air cleaning plants
- suitable for general industrial measurements

Technical data

Parameter		Type 1	Type 2
installation		individual installation at inner tank wall	mounting at immersion armature by means of 2 x PA 6.6 M8 x 16
dimen- sions	cap	260 mm x 165 mm x 130 mm	260 mm x 165 mm x 90 mm
	hanging	200 mm x 20 mm x 185 mm	-
material		PP	
permitted temperature range		0 to +75 °C	



We will be pleased to assist you by selecting the suitable option that meet your requirements. In addition to the displayed order options special customized designs are certainly possible. Please contact us!

The immersion armature can be found in the respective technical data sheet.

Specifications are subject to modifications.